



KEVLAR

INTERNATIONAL PROPERTIES



KEVLAR

INTERNATIONAL PROPERTIES



Overview

Our Story
Mission
Vision

Location

Dubai
Marina

Lifestyle

Gym
Spa
Pool
Restaurants

Marina Star

The Apartments
Studio
One Bedroom
Two Bedroom
Layouts

KEVLAR

INTERNATIONAL PROPERTIES



CONDOR

OUR STORY

The award-winning global group was established in 1983 in Dubai, UAE. For over 40 years, Mr. V. Sivaprasad; CEO and founder, has reimagined luxurious towers, hotels and hospitals that seamlessly support people's lifestyles, with more than 400 successfully completed projects across the Middle East and Asia.

MISSION

To be the preferred realty partner for customers, creating high-quality spaces for living. To offer innovative, next-generation concepts in construction, design & customer satisfaction. To become an admired brand attracting the best talent to our organization.

VISION

To establish long lasting relations with clients based on the foundation of quality, integrity and transparency that go above and beyond to protect their investments.



KEVLAR

INTERNATIONAL PROPERTIES



A TRULY INVESTOR-FRIENDLY CITY DUBAI

Dubai is the world's most innovative and investor-friendly cities with a truly international population. The city recently ranked third among the leading foreign direct investment locations, thanks to its safety, quality of life, and global connectivity. In 2021, Dubai registered the highest annual value in terms of property deals in history.

CREATE YOUR OWN CALM DUBAI MARINA

The Condor Marina Star's waterfront location makes life in Dubai simple. Positioned in a rare Marina enclave with a nearby beach, yacht moorings, lively restaurants, global malls, and pop-up markets, all in a community-minded neighborhood blended with the charisma of a truly international city.

TOMORROW, REIMAGINED THE FUTURE OF DUBAI

Dubai continues to build on its forward-thinking initiatives as a world-leading innovative and sustainable city. Their roadmap for the future measures residents' happiness, economic growth, and the resilience of resources and infrastructure -which includes the Dubai to Abu Dhabi Hyperloop; an 151 km ultra-fast train line.

KEVLAR

INTERNATIONAL PROPERTIES



GO
WHERE
YOU
FEEL MOST
ALIVE

KEVLAR

INTERNATIONAL PROPERTIES

The Condor Marina Star Residence is a graceful 27-floor landmark in one of Dubai's most prestigious locations. Gently rounded elements and curved outlines lend a subtle softness to its architecture, while gardens and greenery bringing life to its expansive balconies and terraces.

KEVLAR
INTERNATIONAL PROPERTIES

Gracing the pinnacle of Dubai Marina, this exclusive collection of residences and furnished or unfurnished apartments is enhanced by open views of the ocean and an unprecedented attention to detail.



KEVLAR

INTERNATIONAL PROPERTIES



A PLACE OF *Beauty.*

The Condor Marina Star offers easy access to all of Dubai's business districts, beautiful beaches and luxurious shopping and dining destinations, including the 390,000 sq.ft Dubai Marina Mall with it's 130 stores and fresco waterfront dining. All are accessible via foot, vehicle, and public transport links which can be found conveniently at your doorstep.



WHERE THE SKY



5 Minutes
Jumeirah Beach Residences



24 Minutes
Dubai International Airport



25 Minutes
Al Maktoum International Airport



5 Minutes
Dubai Marina Mall



8 Minutes
The Palm Jumeirah



8 Minutes
Emirates Golf Club



18 Minutes
Burj Khalifa & Dubai Mall



18 Minutes
Downtown Dubai



18 Minutes
Dubai Opera House



19 Minutes
Dubai World Trade Centre



15 Minutes
Dubai Investment Park



18 Minutes
Dubai International
Financial Centre (DIFC)

6



**CONDOR
MARINA STAR**
RESIDENCES DUBAI

2 minutes entry and 3 minutes exit to
Sheikh Zayed highway

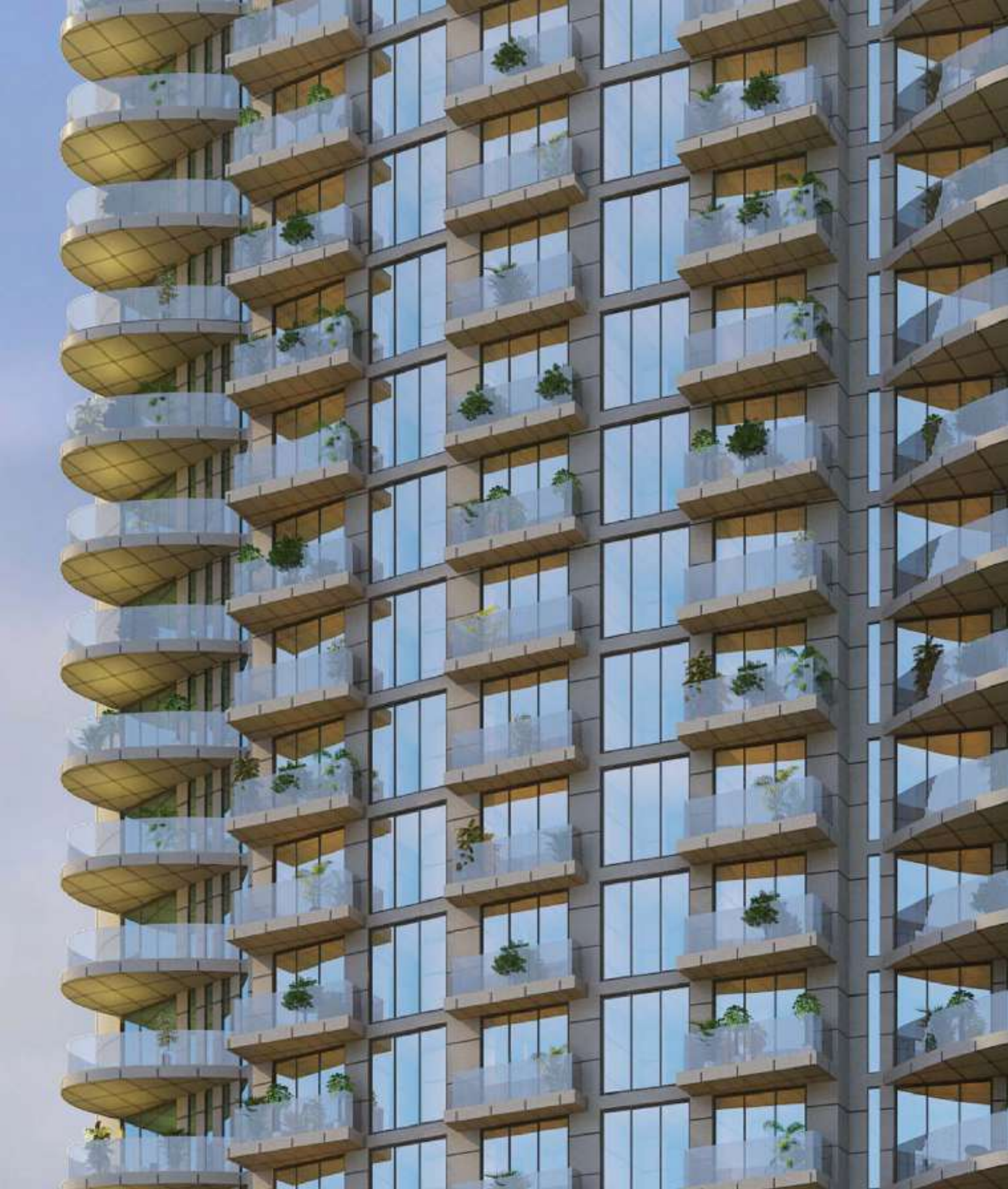
KEVLAR
INTERNATIONAL PROPERTIES

A man with short dark hair, wearing a white t-shirt, is seen from the back, carrying a young child with light brown hair on his shoulders. The child is wearing a grey t-shirt and light-colored shorts. They are both looking out over a bright, hazy cityscape with tall buildings in the background. The sky is a mix of light blue and white, suggesting a bright, sunny day.

GRACIOUS
LIVING

KEVLAR

INTERNATIONAL PROPERTIES



NUMBER
OF UNITS

STUDIO
77

ONE BEDROOM
94

TWO BEDROOM
30

DUPLEX VILLA
03

PENTHOUSE
02

KEVLAR

INTERNATIONAL PROPERTIES



An aerial photograph of the Dubai Marina skyline. The image shows a dense cluster of modern skyscrapers, including the Condor Marina Star Residences. The buildings are reflected in the water of the Dubai Marina. In the background, the Dubai Eye (Ferris wheel) is visible. The sky is clear and blue. The text "A GLIMPSE INTO THE CONDOR MARINA STAR RESIDENCES" is overlaid in the top left corner.

A GLIMPSE INTO THE CONDOR MARINA STAR RESIDENCES

KEVLAR

INTERNATIONAL PROPERTIES



THE RESIDENCES

Apartments at the Condor Marina Star's are designed with a unique floor plan that truly maximizes space, along with thoughtful neutral colorways and rich yet natural textures. Explore what each unit can offer you.

APARTMENTS

From the moment you arrive at the Condor Marina Star, you have space to be you. Choose from custom furnished or unfurnished apartments so you can make your space your own.

LIVING ROOMS

Glass walls and custom lighting add a natural glow, with the cityscape becoming an extension of your living room and dining area.

KITCHENS

The sleek kitchens offer unique features including a elegant worktop and backsplash, bespoke hardware, lacquer cabinets and handleless doors.

BATHROOMS

A calming, personal sanctuary that's efficiently beautiful. Our modern designs & luxurious fixtures create an elegant and cozy environment while our smart storage solutions offers space for everything you need.

KEVLAR

INTERNATIONAL PROPERTIES



All the facilities you need on the inside, with a desirable neighborhood outside. Everything you need, on sea or on land, is at your disposal.



KEVLAR

INTERNATIONAL PROPERTIES



A NEW STANDARD

FACILITIES AND AMENITIES

No detail has been spared in The Condor Marina Star with functional, luxurious and striking amenities alongside all the privileges of living in the upper marina area.

ROOF TOP INFINITY POOL

The expansive pool is perfect for a dip against the backdrop of the city, overlooking the Ocean.

SMART HOME SYSTEM

Remote security and monitoring for peace of mind, wherever you are.

LIFE STYLE

Array of retail, restaurant and amenities at your doorstep.

WELLNESS

Soak in panoramic views while you rejuvenate at a luxurious state-of-the-art gym and spa rooms. Enjoy top amenities, separate for men and women, like steam and sauna for the ultimate relaxation experience.

YOGA ROOM

Balance body and mind in a room designed for yoga and meditation.

KEVLAR

INTERNATIONAL PROPERTIES





Community Coffee Shops



Spa Rooms



Yoga studio



Gym



Co-working spaces



Luxurious main entrance lobby



Roof top Infinity pool



High quality materials



Facade lighting



4B+G+27 Levels



Retail outlets



Spectacular view



Community living



Central - chiller - air conditioning system with 'BTU' Meter



Fully equipped 'GRMS'

KEVLAR

INTERNATIONAL PROPERTIES





MARINA STAR

SONDER
MARINA STAR

SONDER
MARINA STAR

KEVLAR

INTERNATIONAL PROPERTIES



A DIVERSE AND WELCOMING SPACE



THE LOBBY

The Lobby sets the tone for an unexpected escape within the Marina.

KEVLAR

INTERNATIONAL PROPERTIES

RECHARGE. RELAX. REPEAT.

ROOF TOP INFINITY POOL

The best view is from the roof terrace - the ideal spot to relax and enjoy the Marina.

KEVLAR

INTERNATIONAL PROPERTIES



KEVLAR

INTERNATIONAL PROPERTIES



STIMULATES & MOTIVATES



GYM

Designed with your whole body in mind.

The gym is a vibrant and engaging space providing residents the best motivation to get moving

KEVLAR

INTERNATIONAL PROPERTIES

STUDIO LIVING ROOM

Studio apartments can be an entertaining space or a chic refuge with concealed storage to cleverly maximize space

Open-plan living, dining, kitchen and bedroom area.
Built-in wardrobe.
Bathroom with rain shower & bathtub.
Spacious balcony.



KEVLAR
INTERNATIONAL PROPERTIES

STUDIO
BEDROOM



KEVLAR

INTERNATIONAL PROPERTIES

STUDIO
BATHROOM

KEVLAR

INTERNATIONAL PROPERTIES

ONE BEDROOM

LIVING ROOM

These apartments feature a large bedroom, spacious kitchen, panelled walls that reveal vast amounts of storage space and a guest bathroom. Each unit offers multiple views of the city, marina or open sea, with an abundance of natural light

Open-plan living and dining area, separate kitchen, master bedroom, bathroom with rain-shower & bathtub, powder room and two spacious balconies



KEVLAR

INTERNATIONAL PROPERTIES

ONE BEDROOM KITCHEN

With the aim of creating spaces that inspire,
the kitchen combines functionality with its design.



KEVLAR

INTERNATIONAL PROPERTIES

ONE BEDROOM BEDROOM

Created to be a personal sanctuary with views that help you relax and unwind.
Exclusive balcony for bedroom.



KEVLAR

INTERNATIONAL PROPERTIES

ONE BEDROOM BATHROOM

A calming, personal sanctuary that is efficiently beautiful with smart storage for everything you need.

Bathroom with Bathtub and rain shower.



KEVLAR

INTERNATIONAL PROPERTIES

TWO BEDROOM LIVING ROOM

This apartment boasts direct views of the Marina and the city
Units feature large bedrooms and ample built-in wardrobe space to create a modern sanctuary

Open-plan living and dining area, Separate kitchen, Bedroom with ensuite bathroom, a Powder room and Spacious balconies



KEVLAR

INTERNATIONAL PROPERTIES

TWO BEDROOM
KITCHEN



KEVLAR

INTERNATIONAL PROPERTIES

TWO BEDROOM DINING ROOM

When it comes to enjoying meals, tea and coffee with family or friends, the dining room is a special place for making memories.



KEVLAR

INTERNATIONAL PROPERTIES

TWO BEDROOM
BEDROOM



KEVLAR

INTERNATIONAL PROPERTIES

LOBBY

A unique floor plan that truly maximizes space, along with thoughtful neutral colourways and rich yet natural textures.

KEVLAR

INTERNATIONAL PROPERTIES

LIFT

A

B

KEVLAR

INTERNATIONAL PROPERTIES

The generous layout you need to raise a family, with a rare level of comfort and elegance. The area is ideal for children of all ages, with waterfront parks, nurseries and renowned schools close by.

KEYVLAR

INTERNATIONAL PROPERTIES

LAYOUTS

KEVLAR

INTERNATIONAL PROPERTIES





STUDIO TYPE APARTMENT TYPE - A



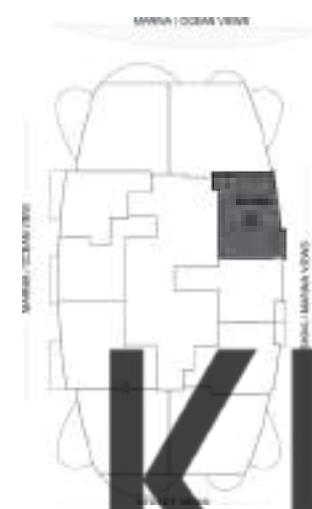
Area Details Type:
A (Studio)

Level:
2nd, 5th - 14th
& 16th - 19th Floor

Living Area:
471.36 sq. ft.

Balcony Area:
33.03 sq. ft.

Total Area:
504.40 sq. ft.

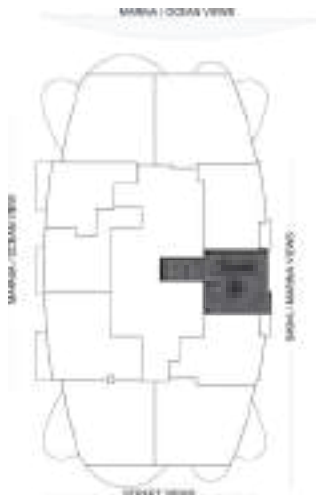


KEVLAR

All room sizes and floor plan measurements are approximate and may vary per unit. Floor plans and unit features are preliminary and proposed only. The Developer reserves the right to modify, revise, change or withdraw any or all of the same in its sole and absolute discretion and without prior notice. Depictions of furnishings, finishes, appliances, counters, soffits, floor coverings and other matters of detail, including, without limitation, items of finish and decoration are conceptual only and are not necessarily included in each unit. Consult your Agreement and the Prospectus for items included with your unit.



STUDIO TYPE APARTMENT TYPE - B



Area Details Type:
B (Studio)

Level:
2nd, 6th - 8th,
14th, 17th & 19th Floor

Living Area:
464.09 sq. ft.

Balcony Area:
26.28 sq. ft.

Total Area:
490.37 sq. ft.

All room sizes and floor plan measurements are approximate and may vary per unit. Floor plans and unit features are preliminary and proposed only. The Developer reserves the right to modify, revise, change or withdraw any or all of the same in its sole and absolute discretion and without prior notice. Depictions of furnishings, finishes, appliances, counters, soffits, floor coverings and other matters of detail, including, without limitation, items of finish and decoration are conceptual only and are not necessarily included in each unit. Consult your Agreement and the Prospectus for items included with your unit.

STUDIO TYPE APARTMENT TYPE - B1



Area Details Type:
B1 (Studio)

Level:
5th, 9th - 13th & 16th Floor

Living Area:
483.62 sq. ft.

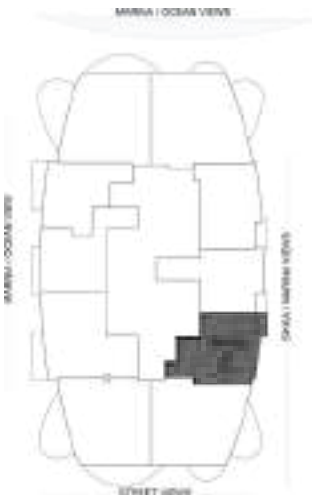
Balcony Area:
-

Total Area:
483.62 sq. ft.

All room sizes and floor plan measurements are approximate and may vary per unit. Floor plans and unit features are preliminary and proposed only. The Developer reserves the right to modify, revise, change or withdraw any or all of the same in its sole and absolute discretion and without prior notice. Depictions of furnishings, finishes, appliances, counters, soffits, floor coverings and other matters of detail, including, without limitation, items of finish and decoration are conceptual only and are not necessarily included in each unit. Consult your Agreement and the Prospectus for items included with your unit.



STUDIO TYPE APARTMENT
TYPE - C



Area Details Type:
C (Studio)

Level:
2nd - 3rd, 6th - 8th, 14th - 15th
& 17th - 19th Floor

Living Area:
485.00 sq. ft.

Balcony Area:
24.69 sq. ft.

Total Area:
509.69 sq. ft.

All room sizes and floor plan measurements are approximate and may vary per unit. Floor plans and unit features are preliminary and proposed only. The Developer reserves the right to modify, revise, change or withdraw any or all of the same in its sole and absolute discretion and without prior notice. Depictions of furnishings, finishes, appliances, counters, soffits, floor coverings and other matters of detail, including, without limitation, items of finish and decoration are conceptual only and are not necessarily included in each unit. Consult your Agreement and the Prospectus for items included with your unit.

STUDIO TYPE APARTMENT
TYPE - C1



Area Details Type:
C1 (Studio)

Level:
5th, 9th - 13th & 16th Floor

Living Area:
500.41 sq. ft.

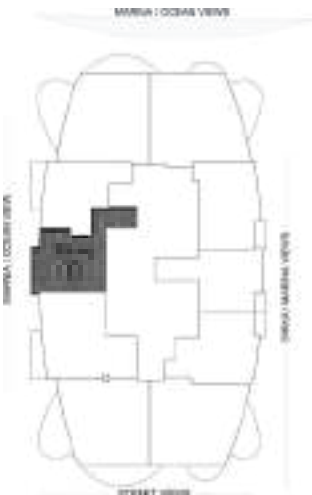
Balcony Area:
-

Total Area:
500.41 sq. ft.

All room sizes and floor plan measurements are approximate and may vary per unit. Floor plans and unit features are preliminary and proposed only. The Developer reserves the right to modify, revise, change or withdraw any or all of the same in its sole and absolute discretion and without prior notice. Depictions of furnishings, finishes, appliances, counters, soffits, floor coverings and other matters of detail, including, without limitation, items of finish and decoration are conceptual only and are not necessarily included in each unit. Consult your Agreement and the Prospectus for items included with your unit.



STUDIO TYPE APARTMENT
TYPE - D



Area Details Type:
D (Studio)

Level:
2nd, 3rd & 5th - 8th
& 10th-19th Floor

Living Area:
465.41 sq. ft.

Balcony Area:
41.55 sq. ft.

Total Area:
506.96 sq. ft.

STUDIO TYPE APARTMENT
TYPE - E



Area Details Type:
E (Studio)

Level:
2nd, 3rd & 5th - 8th
& 10th-19th Floor

Living Area:
414.01 sq. ft.

Balcony Area:
63.07 sq. ft.

Total Area:
477.08 sq. ft.

All room sizes and floor plan measurements are approximate and may vary per unit. Floor plans and unit features are preliminary and proposed only. The Developer reserves the right to modify, revise, change or withdraw any or all of the same in its sole and absolute discretion and without prior notice. Depictions of furnishings, finishes, appliances, counters, soffits, floor coverings and other matters of detail, including, without limitation, items of finish and decoration are conceptual only and are not necessarily included in each unit. Consult your Agreement and the Prospectus for items included with your unit.

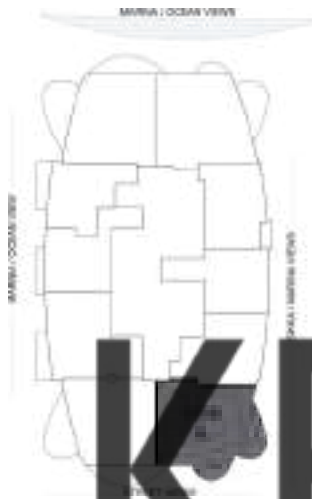
All room sizes and floor plan measurements are approximate and may vary per unit. Floor plans and unit features are preliminary and proposed only. The Developer reserves the right to modify, revise, change or withdraw any or all of the same in its sole and absolute discretion and without prior notice. Depictions of furnishings, finishes, appliances, counters, soffits, floor coverings and other matters of detail, including, without limitation, items of finish and decoration are conceptual only and are not necessarily included in each unit. Consult your Agreement and the Prospectus for items included with your unit.



ACTUAL VIEW
FROM CONDOR MARINA STAR RESIDENCES



ONE-BEDROOM APARTMENT
TYPE - A



Area Details Type:
A (1Bedroom)

Level:
1st - 3rd & 5th - 19th Floor

Living Area:
701.38 sq. ft.

Balcony Area:
139.29 sq. ft.

Total Area:
840.67 sq. ft.

KEVLAR

All room sizes and floor plan measurements are approximate and may vary per unit. Floor plans and unit features are preliminary and proposed only. The Developer reserves the right to modify, revise, change or withdraw any or all of the same in its sole and absolute discretion and without prior notice. Depictions of furnishings, finishes, appliances, counters, soffits, floor coverings and other matters of detail, including, without limitation, items of finish and decoration are conceptual only and are not necessarily included in each unit. Consult your Agreement and the Prospectus for items included with your unit.



ONE-BEDROOM APARTMENT TYPE - B



Area Details Type:

B (1Bedroom)

Level:

2nd, 3rd & 5th - 19th Floor

Living Area:

681.91 sq. ft.

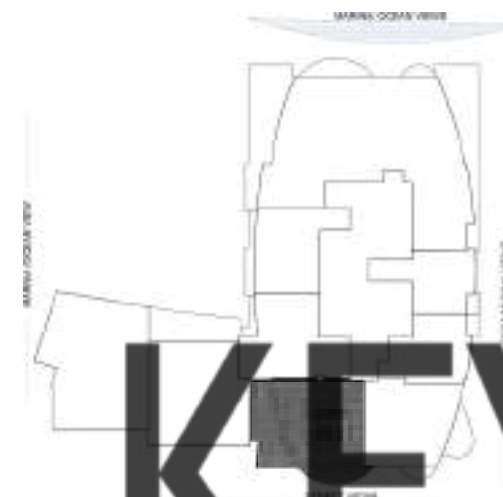
Balcony Area:

239.92 sq. ft.

Total Area:

921.83 sq. ft.

ONE-BEDROOM APARTMENT TYPE - B1



Area Details Type:

B1 (1Bedroom)

Level:

1st Floor

Living Area:

682.75 sq. ft.

Balcony Area:

372.43 sq. ft.

Total Area:

1,055.19 sq. ft.

All room sizes and floor plan measurements are approximate and may vary per unit. Floor plans and unit features are preliminary and proposed only. The Developer reserves the right to modify, revise, change or withdraw any or all of the same in its sole and absolute discretion and without prior notice. Depictions of furnishings, finishes, appliances, counters, soffits, floor coverings and other matters of detail, including, without limitation, items of finish and decoration are conceptual only and are not necessarily included in each unit. Consult your Agreement and the Prospectus for items included with your unit.

All room sizes and floor plan measurements are approximate and may vary per unit. Floor plans and unit features are preliminary and proposed only. The Developer reserves the right to modify, revise, change or withdraw any or all of the same in its sole and absolute discretion and without prior notice. Depictions of furnishings, finishes, appliances, counters, soffits, floor coverings and other matters of detail, including, without limitation, items of finish and decoration are conceptual only and are not necessarily included in each unit. Consult your Agreement and the Prospectus for items included with your unit.



ONE-BEDROOM APARTMENT TYPE - C



Area Details Type:
C (1Bedroom)

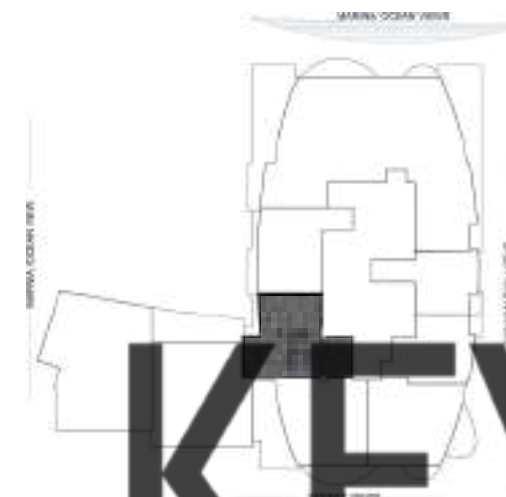
Level:
5th - 19th Floor

Living Area:
624.20 sq. ft.

Balcony Area:
62.97 sq. ft.

Total Area:
687.17 sq. ft.

ONE-BEDROOM APARTMENT TYPE - C1



Area Details Type:
C1 (1Bedroom)

Level:
1st - 3rd Floor

Living Area:
715.98 sq. ft.

Balcony Area:
-

Total Area:
715.98 sq. ft.

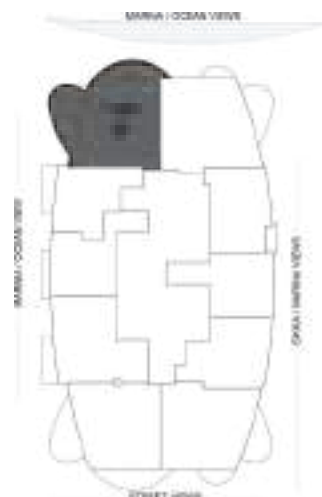
KEVLAR

All room sizes and floor plan measurements are approximate and may vary per unit. Floor plans and unit features are preliminary and proposed only. The Developer reserves the right to modify, revise, change or withdraw any or all of the same in its sole and absolute discretion and without prior notice. Depictions of furnishings, finishes, appliances, counters, soffits, floor coverings and other matters of detail, including, without limitation, items of finish and decoration are conceptual only and are not necessarily included in each unit. Consult your Agreement and the Prospectus for items included with your unit.

All room sizes and floor plan measurements are approximate and may vary per unit. Floor plans and unit features are preliminary and proposed only. The Developer reserves the right to modify, revise, change or withdraw any or all of the same in its sole and absolute discretion and without prior notice. Depictions of furnishings, finishes, appliances, counters, soffits, floor coverings and other matters of detail, including, without limitation, items of finish and decoration are conceptual only and are not necessarily included in each unit. Consult your Agreement and the Prospectus for items included with your unit.



ONE-BEDROOM APARTMENT TYPE - D



Area Details Type:
D (1Bedroom)

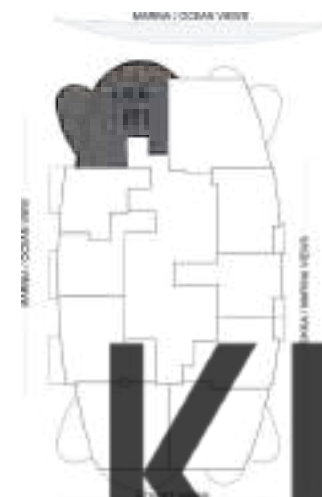
Level:
2nd, 3rd, 5th - 13th
& 15th - 19th Floor

Living Area:
696.29 sq. ft.

Balcony Area:
249.12 sq. ft.

Total Area:
945.41 sq. ft.

ONE-BEDROOM APARTMENT TYPE - D1



Area Details Type:
D1 (1Bedroom)

Level:
14th Floor

Living Area:
617.20 sq. ft.

Balcony Area:
249.18 sq. ft.

Total Area:
866.39 sq. ft.

KEVLAR

All room sizes and floor plan measurements are approximate and may vary per unit. Floor plans and unit features are preliminary and proposed only. The Developer reserves the right to modify, revise, change or withdraw any or all of the same in its sole and absolute discretion and without prior notice. Depictions of furnishings, finishes, appliances, counters, soffits, floor coverings and other matters of detail, including, without limitation, items of finish and decoration are conceptual only and are not necessarily included in each unit. Consult your Agreement and the Prospectus for items included with your unit.

All room sizes and floor plan measurements are approximate and may vary per unit. Floor plans and unit features are preliminary and proposed only. The Developer reserves the right to modify, revise, change or withdraw any or all of the same in its sole and absolute discretion and without prior notice. Depictions of furnishings, finishes, appliances, counters, soffits, floor coverings and other matters of detail, including, without limitation, items of finish and decoration are conceptual only and are not necessarily included in each unit. Consult your Agreement and the Prospectus for items included with your unit.



ONE-BEDROOM APARTMENT TYPE - E



Area Details Type:
E (1Bedroom)

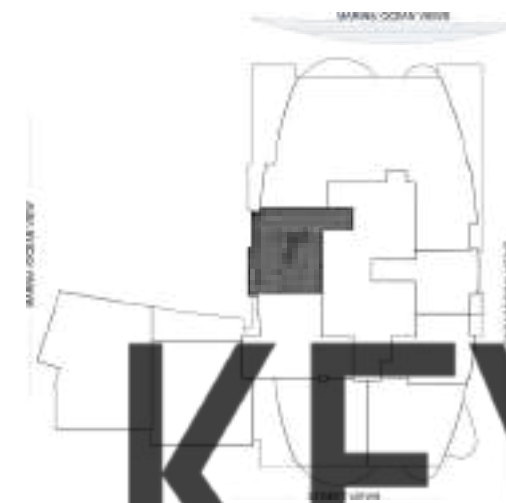
Level:
2nd, 3rd & 5th - 19th Floor

Living Area:
767.16 sq. ft.

Balcony Area:
144.89 sq. ft.

Total Area:
912.05 sq. ft.

ONE-BEDROOM APARTMENT TYPE - F



Area Details Type:
F (1Bedroom)

Level:
1st Floor

Living Area:
582.44 sq. ft.

Balcony Area:
39.93 sq. ft.

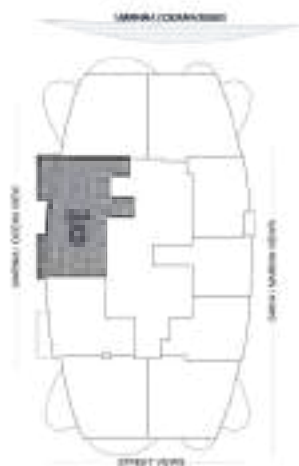
Total Area:
622.37 sq. ft.

All room sizes and floor plan measurements are approximate and may vary per unit. Floor plans and unit features are preliminary and proposed only. The Developer reserves the right to modify, revise, change or withdraw any or all of the same in its sole and absolute discretion and without prior notice. Depictions of furnishings, finishes, appliances, counters, soffits, floor coverings and other matters of detail, including, without limitation, items of finish and decoration are conceptual only and are not necessarily included in each unit. Consult your Agreement and the Prospectus for items included with your unit.

All room sizes and floor plan measurements are approximate and may vary per unit. Floor plans and unit features are preliminary and proposed only. The Developer reserves the right to modify, revise, change or withdraw any or all of the same in its sole and absolute discretion and without prior notice. Depictions of furnishings, finishes, appliances, counters, soffits, floor coverings and other matters of detail, including, without limitation, items of finish and decoration are conceptual only and are not necessarily included in each unit. Consult your Agreement and the Prospectus for items included with your unit.



ONE-BEDROOM APARTMENT
TYPE - G



Area Details Type:
G (1Bedroom)

Level:
9th Floor

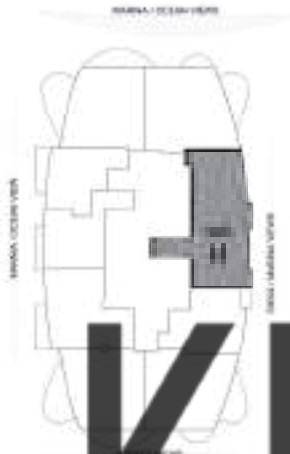
Living Area:
880.27 sq. ft.

Balcony Area:
104.84 sq. ft.

Total Area:
985.11 sq. ft.

All room sizes and floor plan measurements are approximate and may vary per unit. Floor plans and unit features are preliminary and proposed only. The Developer reserves the right to modify, revise, change or withdraw any or all of the same in its sole and absolute discretion and without prior notice. Depictions of furnishings, finishes, appliances, counters, soffits, floor coverings and other matters of detail, including, without limitation, items of finish and decoration are conceptual only and are not necessarily included in each unit. Consult your Agreement and the Prospectus for items included with your unit.

ONE-BEDROOM APARTMENT
TYPE - H



Area Details Type:
H (1Bedroom)

Level:
3rd & 15th Floor

Living Area:
934.31 sq. ft.

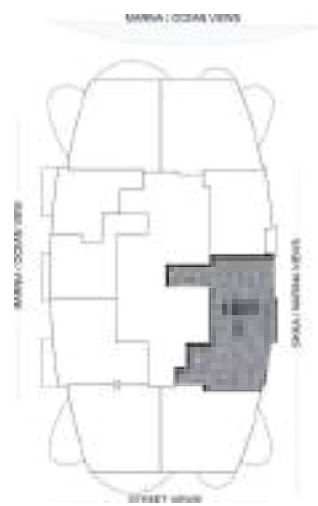
Balcony Area:
59.74 sq. ft.

Total Area:
994.05 sq. ft.

All room sizes and floor plan measurements are approximate and may vary per unit. Floor plans and unit features are preliminary and proposed only. The Developer reserves the right to modify, revise, change or withdraw any or all of the same in its sole and absolute discretion and without prior notice. Depictions of furnishings, finishes, appliances, counters, soffits, floor coverings and other matters of detail, including, without limitation, items of finish and decoration are conceptual only and are not necessarily included in each unit. Consult your Agreement and the Prospectus for items included with your unit.



ONE-BEDROOM APARTMENT TYPE - J



Area Details Type:
J (1Bedroom)

Level:
1st & 18th Floor

Living Area:
948.30 sq. ft.

Balcony Area:
51.24 sq. ft.

Total Area:
999.54 sq. ft.

All room sizes and floor plan measurements are approximate and may vary per unit. Floor plans and unit features are preliminary and proposed only. The Developer reserves the right to modify, revise, change or withdraw any or all of the same in its sole and absolute discretion and without prior notice. Depictions of furnishings, finishes, appliances, counters, soffits, floor coverings and other matters of detail, including, without limitation, items of finish and decoration are conceptual only and are not necessarily included in each unit. Consult your Agreement and the Prospectus for items included with your unit.

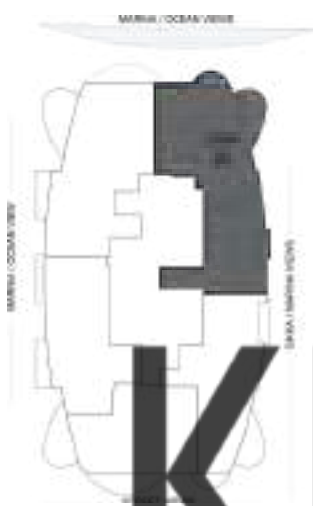
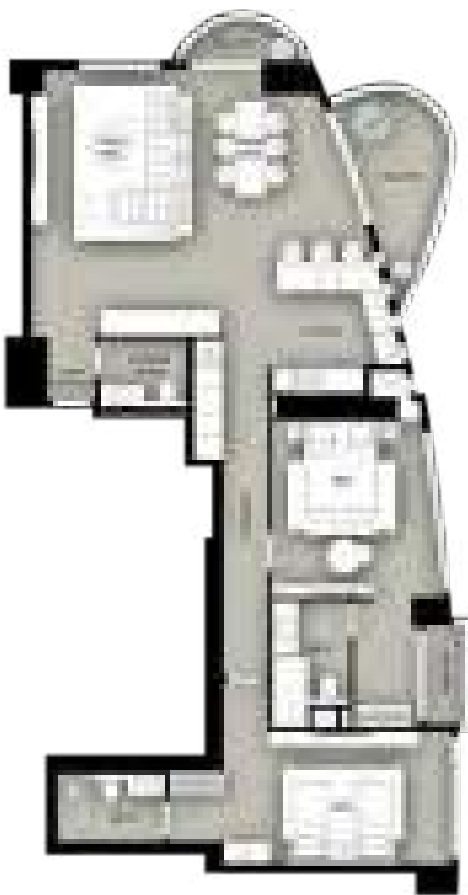


KEYMAR
INTERNATIONAL PROPERTIES

ACTUAL VIEW
FROM CONDOR MARINA STAR RESIDENCES



TWO-BEDROOM APARTMENT
TYPE - A



Area Details Type:
A (2Bedroom)

Level:
4th & 20th - 24th Floor

Living Area:
1,561.74 sq. ft.

Balcony Area:
178.61 sq. ft.

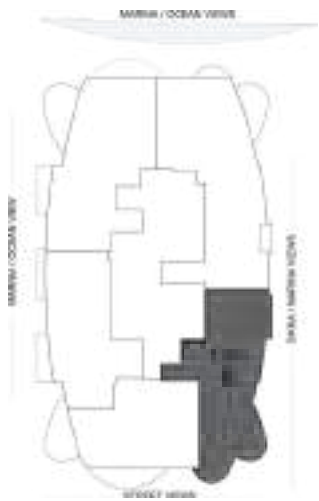
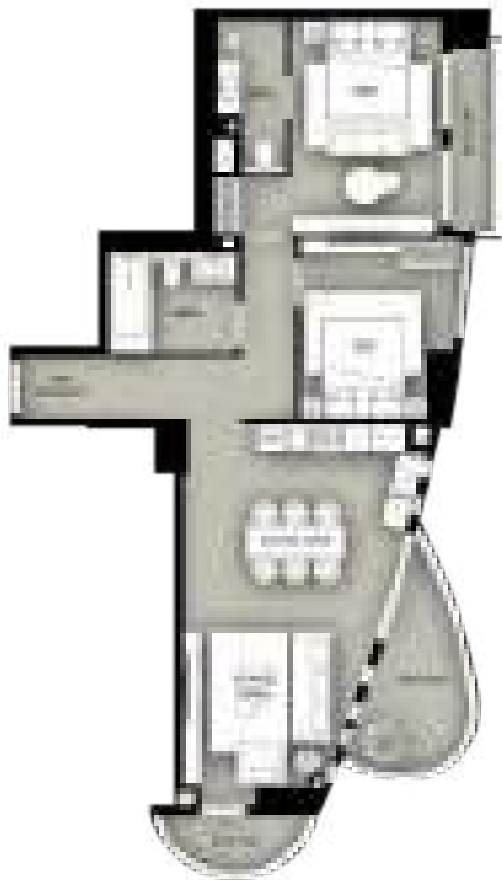
Total Area:
1,740.34 sq. ft.

KEVLAR

All room sizes and floor plan measurements are approximate and may vary per unit. Floor plans and unit features are preliminary and proposed only. The Developer reserves the right to modify, revise, change or withdraw any or all of the same in its sole and absolute discretion and without prior notice. Depictions of furnishings, finishes, appliances, counters, soffits, floor coverings and other matters of detail, including, without limitation, items of finish and decoration are conceptual only and are not necessarily included in each unit. Consult your Agreement and the Prospectus for items included with your unit.



TWO-BEDROOM APARTMENT TYPE - B



Area Details Type:
B (2Bedroom)

Level:
20th - 24th Floor

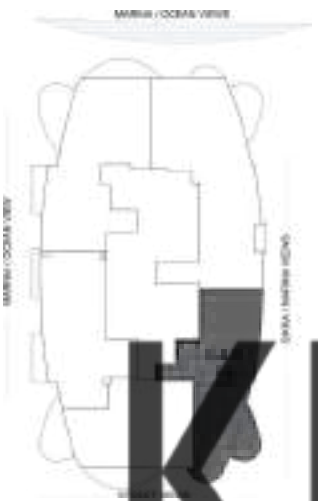
Living Area:
992.97 sq. ft.

Balcony Area:
190.95 sq. ft.

Total Area:
1,183.92 sq. ft.

All room sizes and floor plan measurements are approximate and may vary per unit. Floor plans and unit features are preliminary and proposed only. The Developer reserves the right to modify, revise, change or withdraw any or all of the same in its sole and absolute discretion and without prior notice. Depictions of furnishings, finishes, appliances, counters, soffits, floor coverings and other matters of detail, including, without limitation, items of finish and decoration are conceptual only and are not necessarily included in each unit. Consult your Agreement and the Prospectus for items included with your unit.

TWO-BEDROOM APARTMENT TYPE - B1



Area Details Type:
B1 (2Bedroom)

Level:
4th Floor

Living Area:
1,020.53 sq. ft.

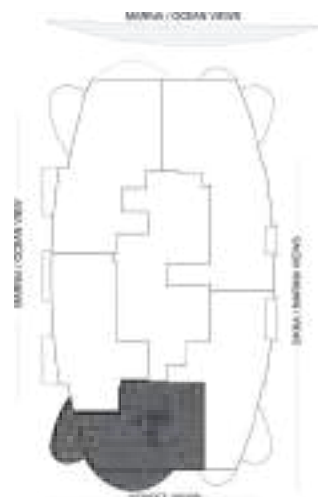
Balcony Area:
139.50 sq. ft.

Total Area:
1,160.03 sq. ft.

All room sizes and floor plan measurements are approximate and may vary per unit. Floor plans and unit features are preliminary and proposed only. The Developer reserves the right to modify, revise, change or withdraw any or all of the same in its sole and absolute discretion and without prior notice. Depictions of furnishings, finishes, appliances, counters, soffits, floor coverings and other matters of detail, including, without limitation, items of finish and decoration are conceptual only and are not necessarily included in each unit. Consult your Agreement and the Prospectus for items included with your unit.



TWO-BEDROOM APARTMENT TYPE - C



Area Details Type:
C (2Bedroom)

Level:
4th & 20th - 24th Floor

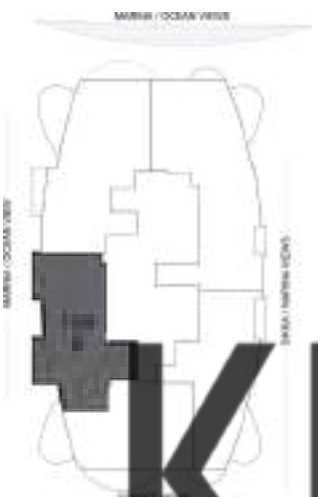
Living Area:
912.78 sq. ft.

Balcony Area:
240.32 sq. ft.

Total Area:
1,153.10 sq. ft.

All room sizes and floor plan measurements are approximate and may vary per unit. Floor plans and unit features are preliminary and proposed only. The Developer reserves the right to modify, revise, change or withdraw any or all of the same in its sole and absolute discretion and without prior notice. Depictions of furnishings, finishes, appliances, counters, soffits, floor coverings and other matters of detail, including, without limitation, items of finish and decoration are conceptual only and are not necessarily included in each unit. Consult your Agreement and the Prospectus for items included with your unit.

TWO-BEDROOM APARTMENT TYPE - D



Area Details Type:
D (2Bedroom)

Level:
4th & 20th - 24th Floor

Living Area:
1,006.53 sq. ft.

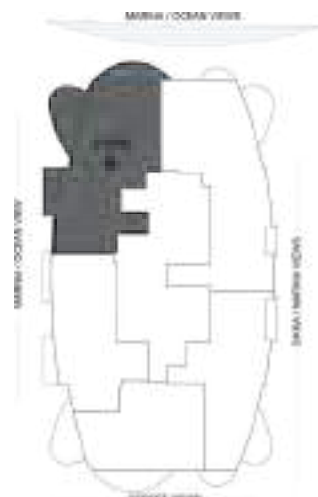
Balcony Area:
105.04 sq. ft.

Total Area:
1,111.57 sq. ft.

All room sizes and floor plan measurements are approximate and may vary per unit. Floor plans and unit features are preliminary and proposed only. The Developer reserves the right to modify, revise, change or withdraw any or all of the same in its sole and absolute discretion and without prior notice. Depictions of furnishings, finishes, appliances, counters, soffits, floor coverings and other matters of detail, including, without limitation, items of finish and decoration are conceptual only and are not necessarily included in each unit. Consult your Agreement and the Prospectus for items included with your unit.



TWO-BEDROOM APARTMENT TYPE - E



Area Details Type:
E (2Bedroom)

Level:
20th - 24th Floor

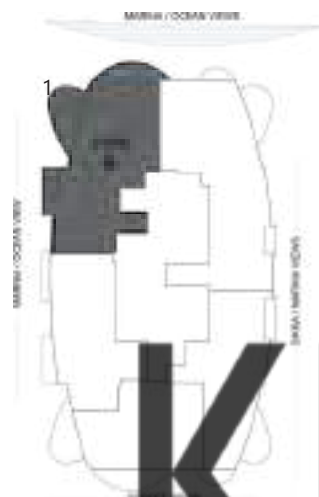
Living Area:
1,313.41 sq. ft.

Balcony Area:
312.26 sq. ft.

Total Area:
1,625.67 sq. ft.

All room sizes and floor plan measurements are approximate and may vary per unit. Floor plans and unit features are preliminary and proposed only. The Developer reserves the right to modify, revise, change or withdraw any or all of the same in its sole and absolute discretion and without prior notice. Depictions of furnishings, finishes, appliances, counters, soffits, floor coverings and other matters of detail, including, without limitation, items of finish and decoration are conceptual only and are not necessarily included in each unit. Consult your Agreement and the Prospectus for items included with your unit.

TWO-BEDROOM APARTMENT TYPE - E1



Area Details Type:
E1 (2Bedroom)

Level:
4th Floor

Living Area:
1,240.11 sq. ft.

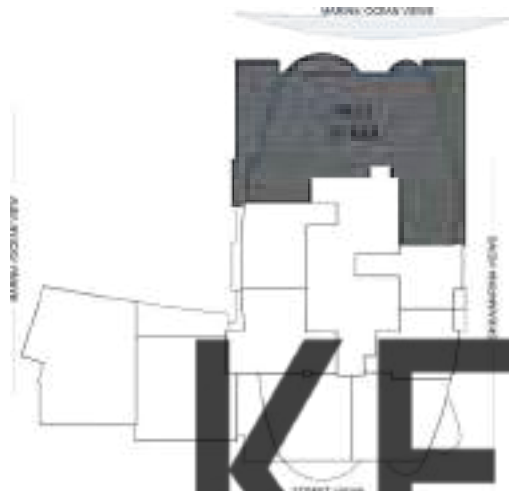
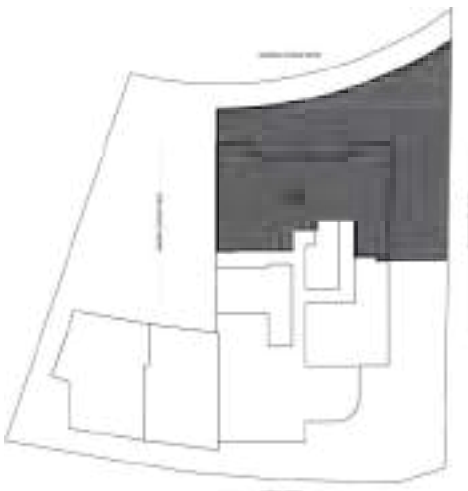
Balcony Area:
312.15 sq. ft.

Total Area:
1,552.26 sq. ft.

All room sizes and floor plan measurements are approximate and may vary per unit. Floor plans and unit features are preliminary and proposed only. The Developer reserves the right to modify, revise, change or withdraw any or all of the same in its sole and absolute discretion and without prior notice. Depictions of furnishings, finishes, appliances, counters, soffits, floor coverings and other matters of detail, including, without limitation, items of finish and decoration are conceptual only and are not necessarily included in each unit. Consult your Agreement and the Prospectus for items included with your unit.



DUPLEX VILLA TYPE V-103 (FACING MARINA)



Area Details Type:
V-103 (Duplex Villa)

Level:
Ground + 1st Floor

Living Area:
4,846.88 sq. ft.

Balcony Area:
4,407.80 sq. ft.

Total Area:
9,254.68 sq. ft.

KEVLAR

All room sizes and floor plan measurements are approximate and may vary per unit. Floor plans and unit features are preliminary and proposed only. The Developer reserves the right to modify, revise, change or withdraw any or all of the same in its sole and absolute discretion and without prior notice. Depictions of furnishings, finishes, appliances, counters, soffits, floor coverings and other matters of detail, including, without limitation, items of finish and decoration are conceptual only and are not necessarily included in each unit. Consult your Agreement and the Prospectus for items included with your unit.



DUPLEX VILLA TYPE V-102 (FACING MARINA)



Area Details Type:
V-102 (Duplex Villa)

Level:
1st + 2nd Floor

Living Area:
1,971.41 sq. ft.

Balcony Area:
492.34 sq. ft.

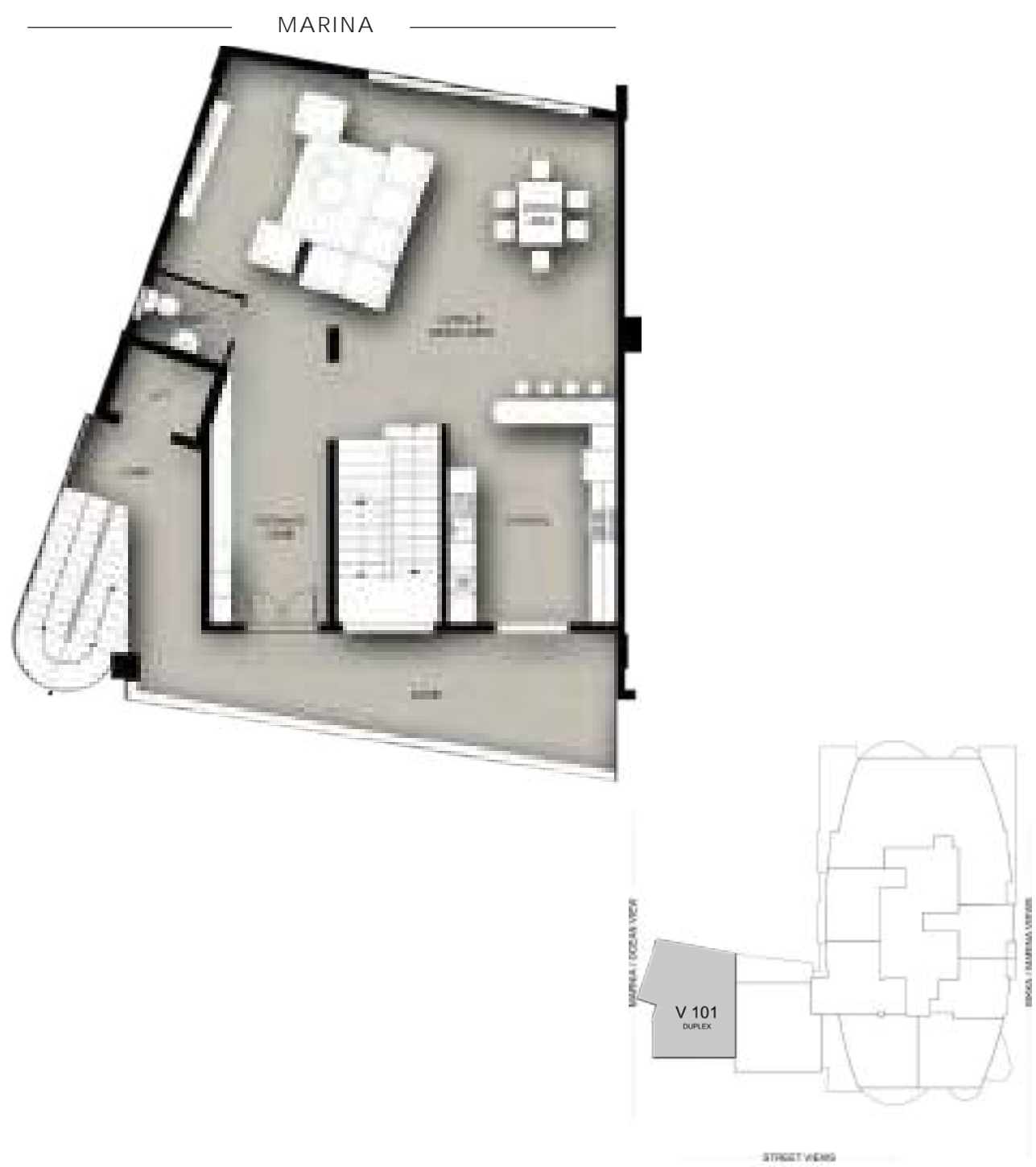
Total Area:
2,463.75 sq. ft.

KEVLAR

All room sizes and floor plan measurements are approximate and may vary per unit. Floor plans and unit features are preliminary and proposed only. The Developer reserves the right to modify, revise, change or withdraw any or all of the same in its sole and absolute discretion and without prior notice. Depictions of furnishings, finishes, appliances, counters, soffits, floor coverings and other matters of detail, including, without limitation, items of finish and decoration are conceptual only and are not necessarily included in each unit. Consult your Agreement and the Prospectus for items included with your unit.



DUPLEX VILLA TYPE V-101 (FACING MARINA)



Area Details Type:
V-101 (Duplex Villa)

Level:
1st + 2nd Floor

Living Area:
2,563.75 sq. ft.

Balcony Area:
299.77 sq. ft.

Total Area:
2,863.52 sq. ft.

All room sizes and floor plan measurements are approximate and may vary per unit. Floor plans and unit features are preliminary and proposed only. The Developer reserves the right to modify, revise, change or withdraw any or all of the same in its sole and absolute discretion and without prior notice. Depictions of furnishings, finishes, appliances, counters, soffits, floor coverings and other matters of detail, including, without limitation, items of finish and decoration are conceptual only and are not necessarily included in each unit. Consult your Agreement and the Prospectus for items included with your unit.



PENTHOUSE ROOF LEVEL
25th FLOOR



Area Details Type:
Roof

Level:
25th Floor

Living Area:
3,592.13 sq. ft.

Balcony Area:
3,188.49 sq. ft.

Total Area:
6,780.62 sq. ft.

PENTHOUSE ROOF LEVEL
26th FLOOR



Area Details Type:
Roof

Level:
26th Floor

Living Area:
3,598.05 sq. ft.

Balcony Area:
2,443.08 sq. ft.

Total Area:
6,014.14 sq. ft.

KEVLAR

All room sizes and floor plan measurements are approximate and may vary per unit. Floor plans and unit features are preliminary and proposed only. The Developer reserves the right to modify, revise, change or withdraw any or all of the same in its sole and absolute discretion and without prior notice. Depictions of furnishings, finishes, appliances, counters, soffits, floor coverings and other matters of detail, including, without limitation, items of finish and decoration are conceptual only and are not necessarily included in each unit. Consult your Agreement and the Prospectus for items included with your unit.





800DEVMARK

Condor Marina Star Sales Center
Dubai Marina, Dubai, UAE

KEVLAR

DISCLAIMER

Any images and visualizations contained herein are provided for illustrative and marketing purposes only. All information contained herein is subject to change without notice and without liability and only the information contained in the final Sales and Purchase Agreement entered into between the Seller and Buyer will have any legal effect. E&OE.

INTERNATIONAL PROPERTIES